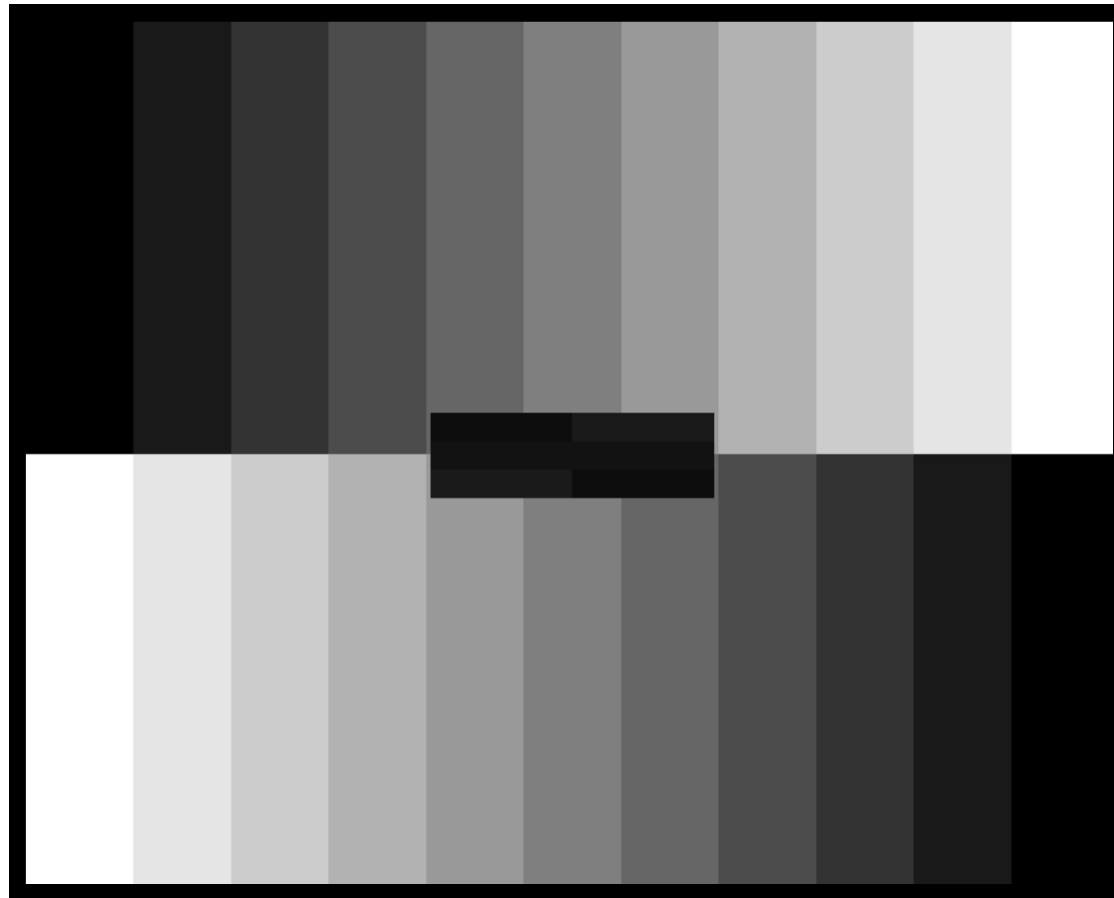


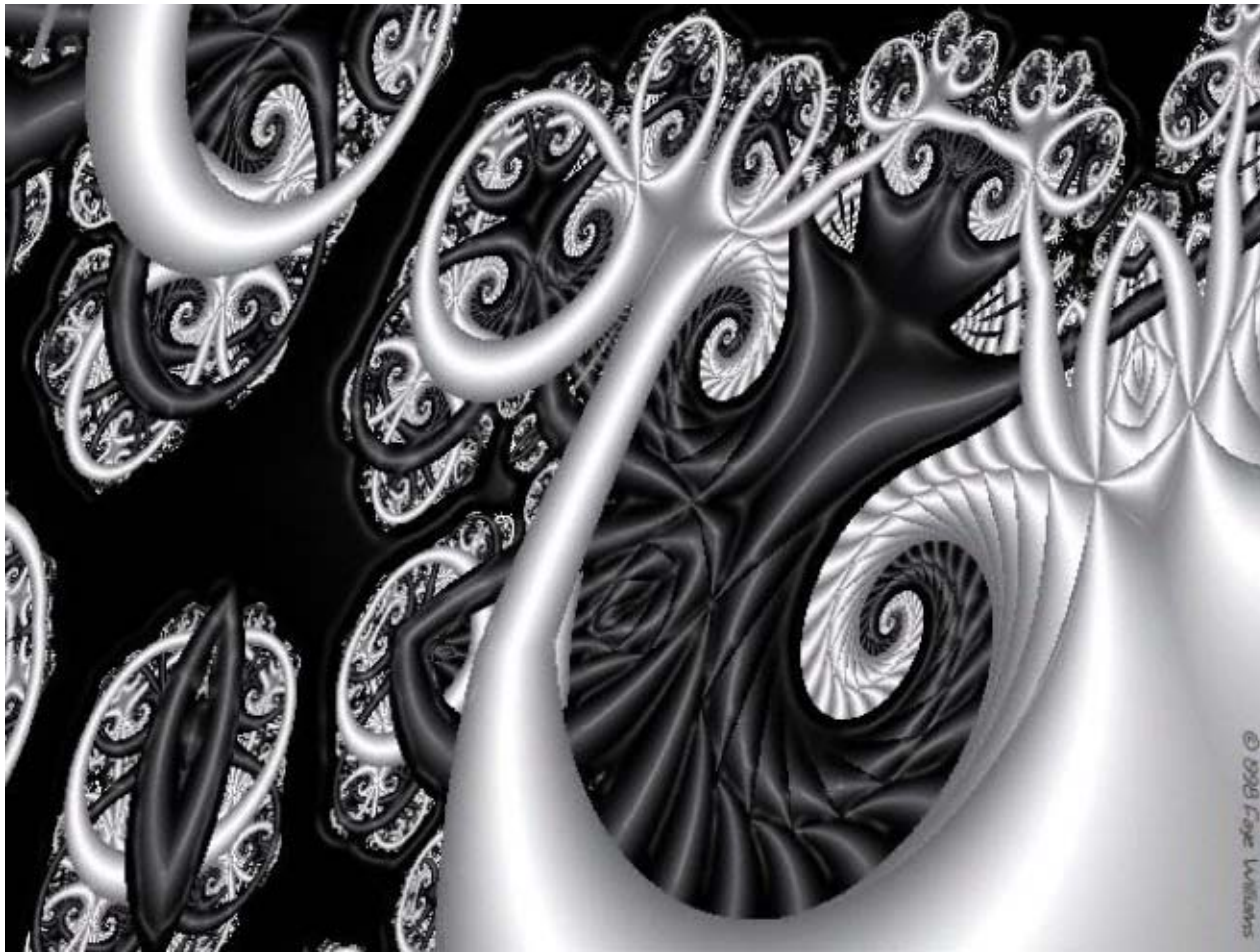
value

The element of art and design that describes the lightness or darkness of a colour or tone.

Gray scale:

shows the range of values from white to black.





- Is this image a good example of variation in value?
- When there is a large difference between the lights and darks in a work of art (both ends of the value scale are represented) it is said to have...

Contrast



- **Value Contrast** can be used to create strong designs by creating emphasis and interest.



- **Value contrast** can also create a distinct mood in a work of art
- What mood is created by the contrast in this image?
- Where is the focal point, or area of interest? How is this created by value contrast?

We've looked at the grayscale and the different gray values that come between black and white.

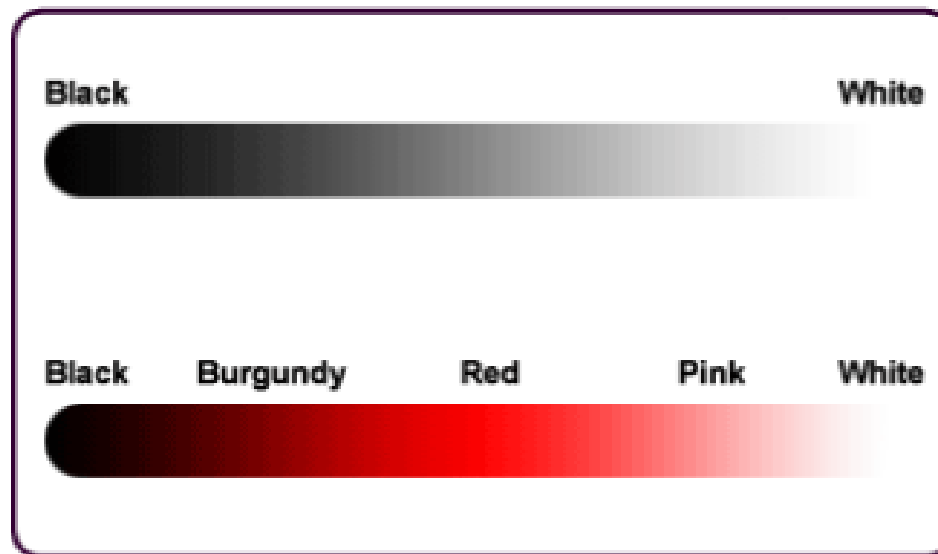
It is the same when we look at different values of a particular colour...

A work of art that uses different values of only one colour is called “MONOCHROMATIC” which, literally translated, means “ONE COLOUR”. In this work, Canadian artist, Jack Shadbolt, has used a range of different values of brown as the dominant colour scheme.

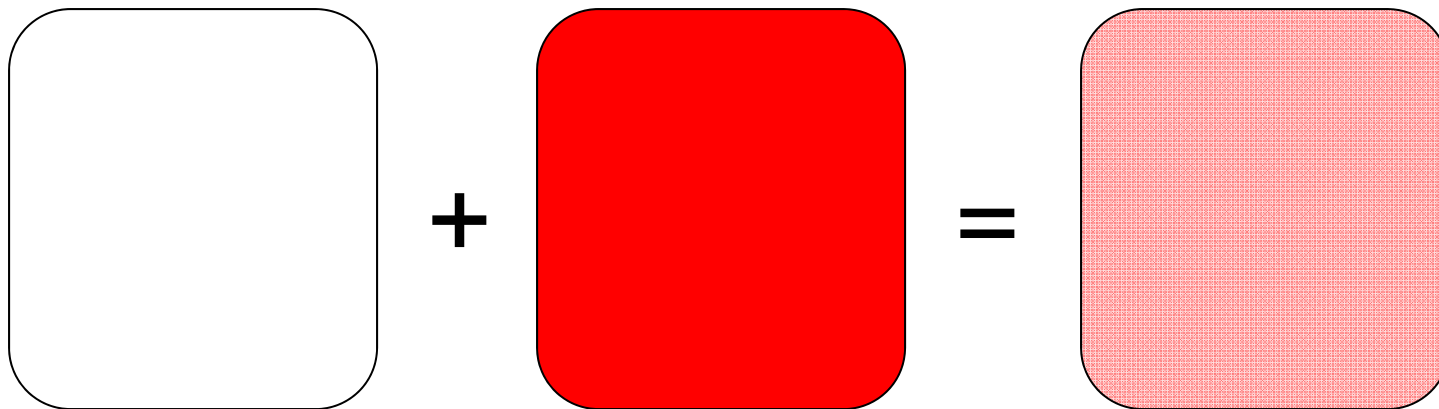


Just like the gray scale, the value scale for a colour shows the range in value of that colour from white to black.

For example: pink is not a colour of its own, it is a lighter value of red, which is also called a **TINT**.

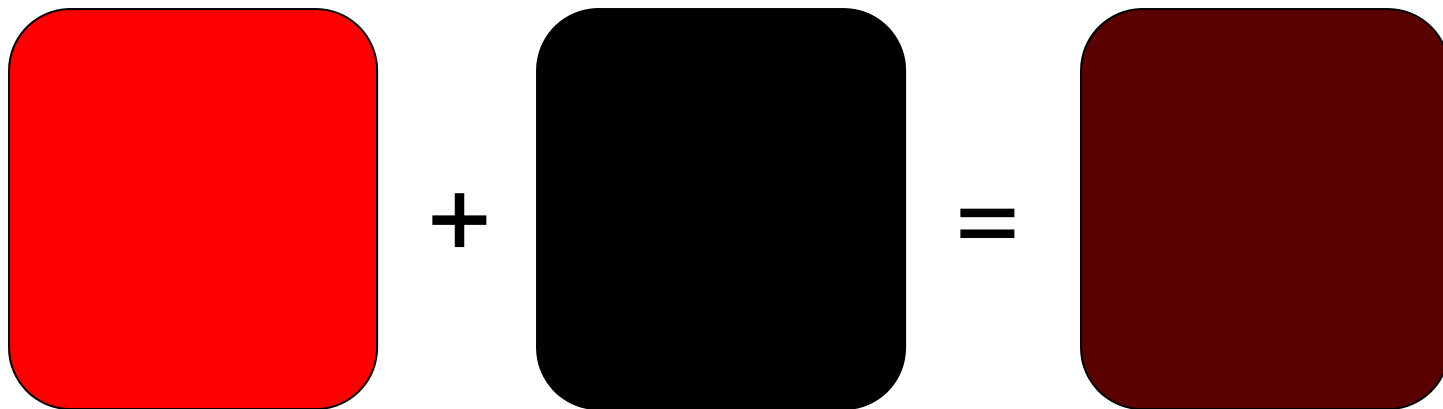


A lighter value of a colour is called a **TINT** and is made by mixing the colour with white
eg: pink is a **TINT** of red, or a lighter value of red



Important: To mix a **tint**, you must always **start with white** and gradually add the colour a little at a time to get the desired tint.

A darker value of a colour is called a **SHADE** and is made by mixing the colour with black eg: burgundy is a **SHADE** of red, or a darker value of red



Important: To mix a shade, you must always **start with the colour** and gradually add black a little at a time to get the desired shade.

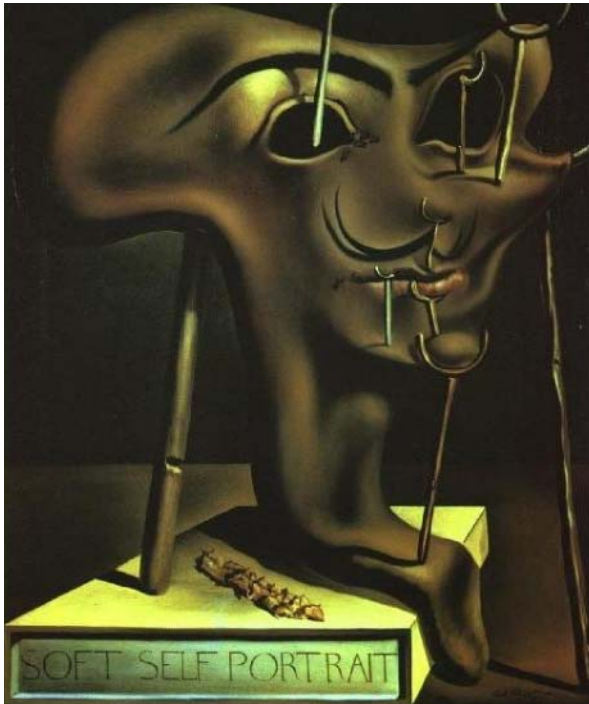
High-Keyed

- A work of art with mainly light values, or tints is called a high-keyed work
- Which of the following works by Vincent Van Gogh do you think is high-keyed?
- What kind of mood is suggested by the lighter values?



Low-Keyed

- A work of art with mainly darker values, or shades is called a low-keyed work
- What have these artists accomplished by using mostly darker values?



Salvador Dali "Soft Self-Portrait with Fried Bacon" 1941



Pablo Picasso
"Woman Ironing"
1904

- Value can also be used to show depth, or create a sense of space in a work of art.
- Objects appear to get lighter in value and fuzzier as they get farther away. This is a way for artists to create the illusion of 3-dimensional space and is called **ATMOSPHERIC PERSPECTIVE**



- Now that you have learned to value value, it's time to use it in your work...
 - Using a pencil, in your sketchbook, create a value scale by using different pressure to create at least 6 different values from very light to very dark
 - Make each square about an inch and use use a ruler to keep your lines neat

